

FROM ANAHOLA TO OPPORTUNITY

Clarence Thing Chock Ching was born in Anahola, Kauaʻi, in 1912—the son of Chinese immigrant farmers and the fifth of eleven children. From the start, his life was shaped by perseverance, family, and a quiet belief that hard work could open any door. In the early 1920s, his parents moved the family to Oʻahu.

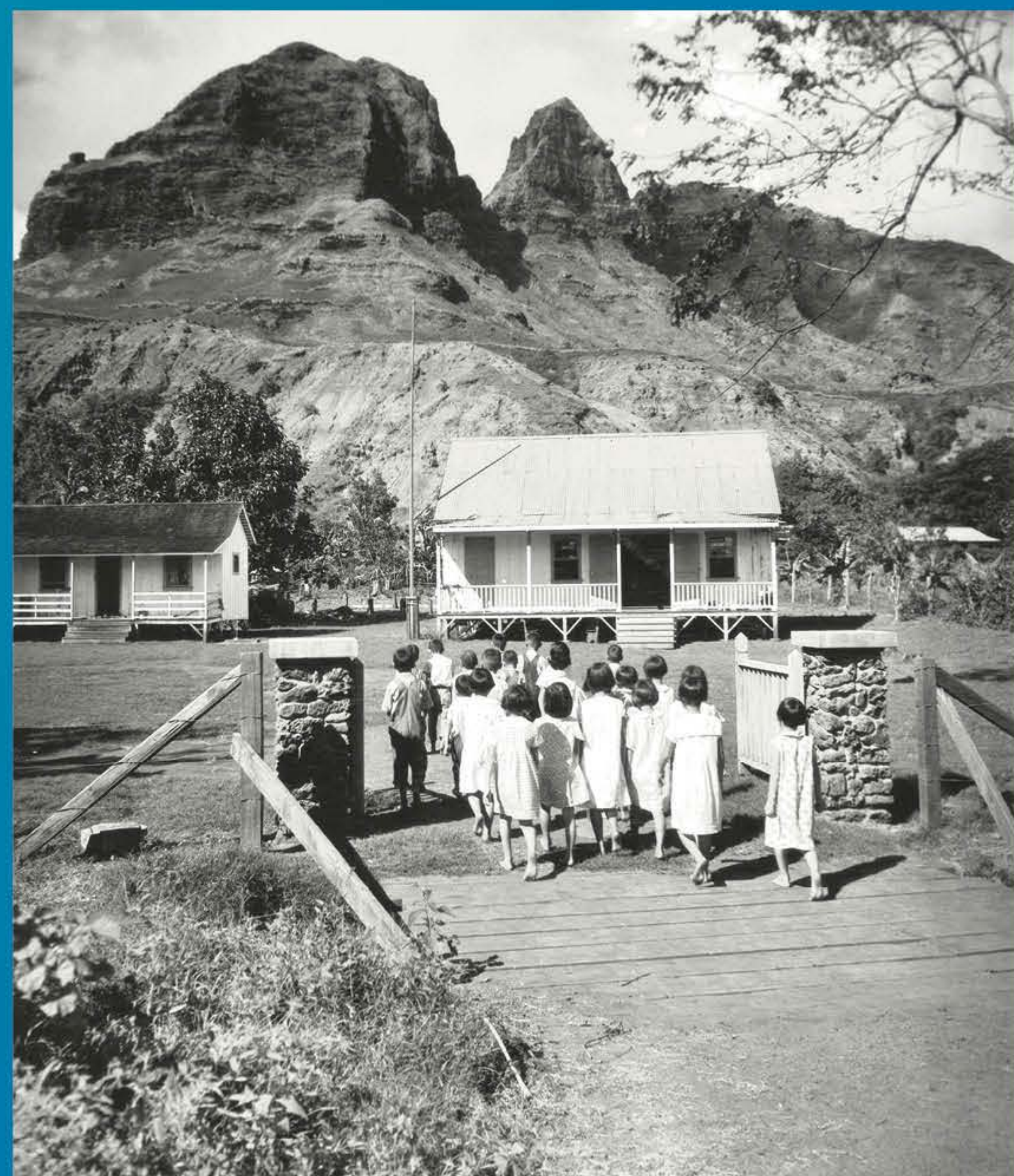


Anahola Bay, Kauaʻi

Courtesy Hawaiʻi State Archives



Clarence T.C. Ching



Kids going to school in Anahola

Courtesy Hawaiʻi State Archives



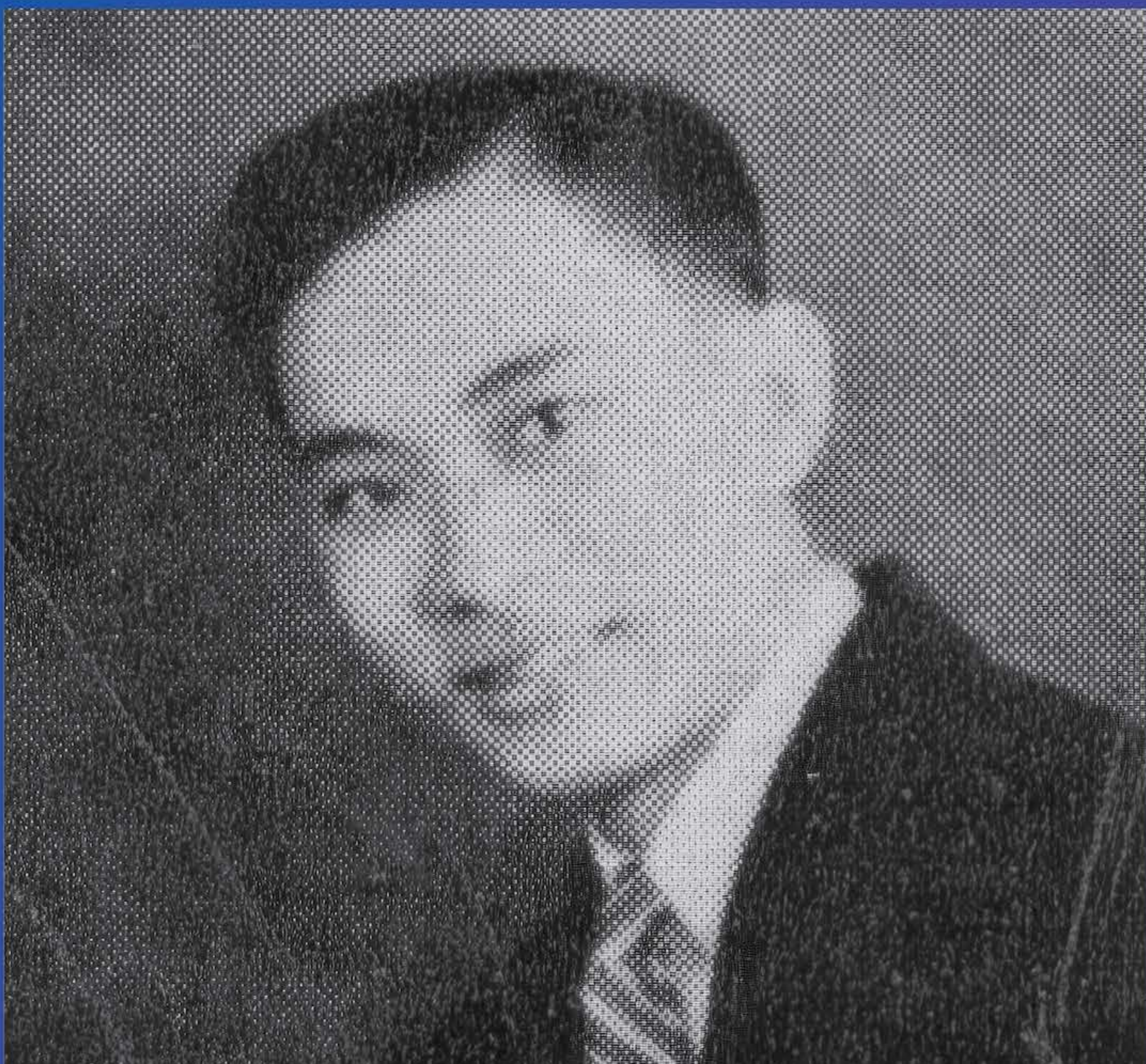
A LEADER IN THE MAKING

On O'ahu, Clarence enrolled at Saint Louis School. Though soft-spoken, he moved with vision and purpose. He became class president and a boxing champion. After graduation, he ran a small general store in Mapunapuna. But his greatest contributions weren't found on store shelves, but in the lives he uplifted, the opportunities he created, and the example he set for others to follow.

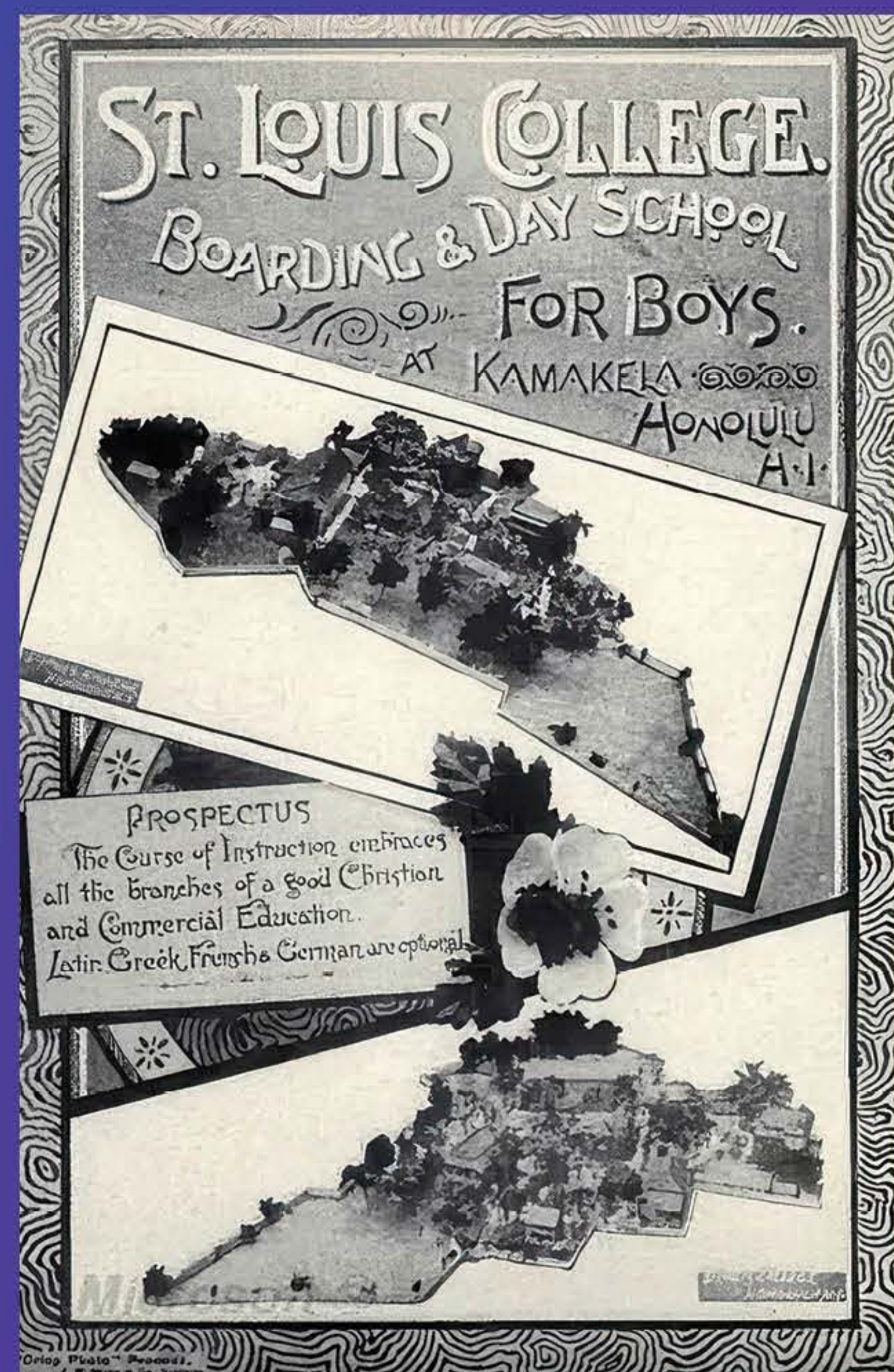


Saint Louis Campus

Courtesy Hawai'i State Archives



High school graduation photo



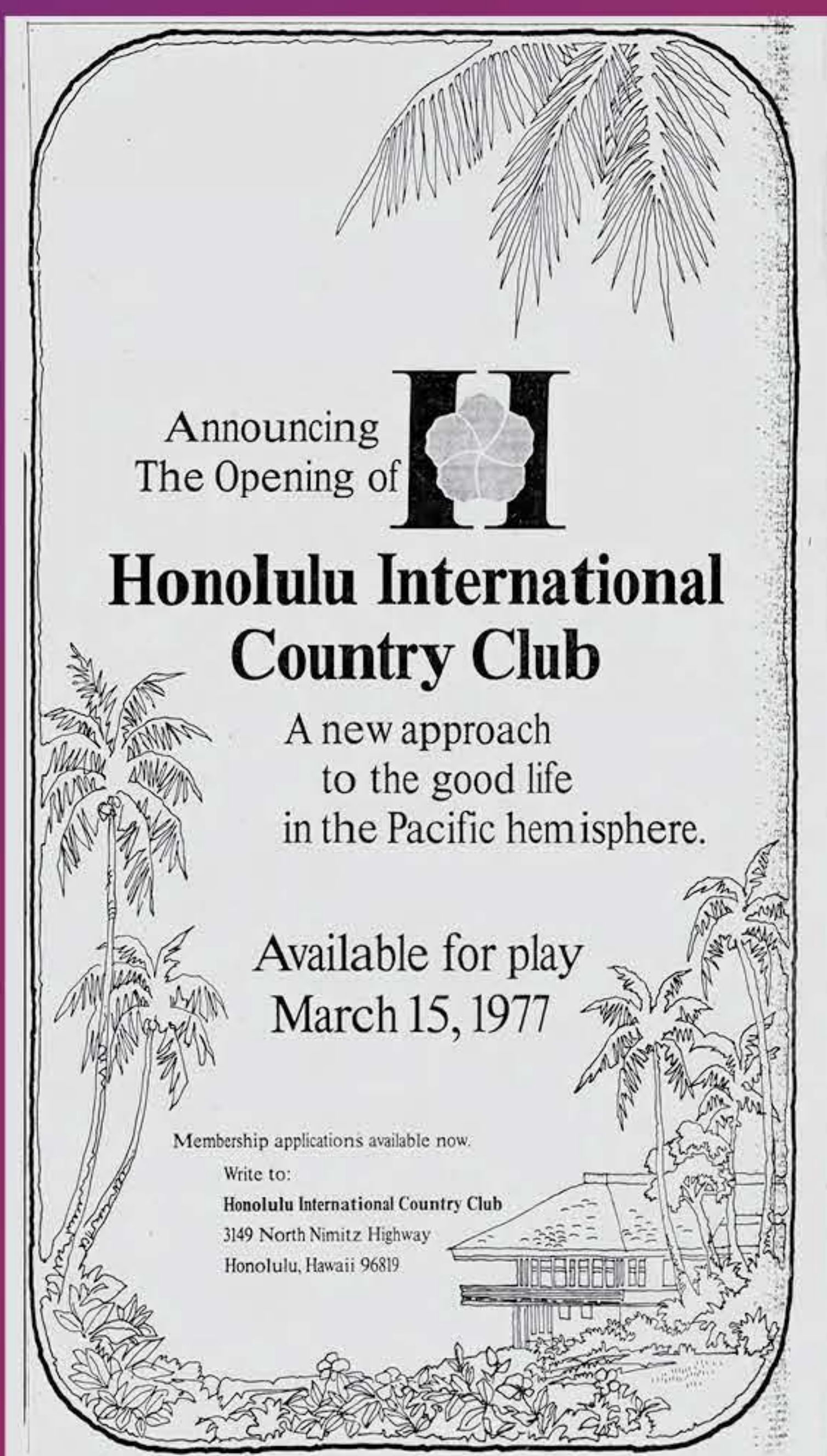
Promotional Flyer

A VISION THAT SHAPED HONOLULU

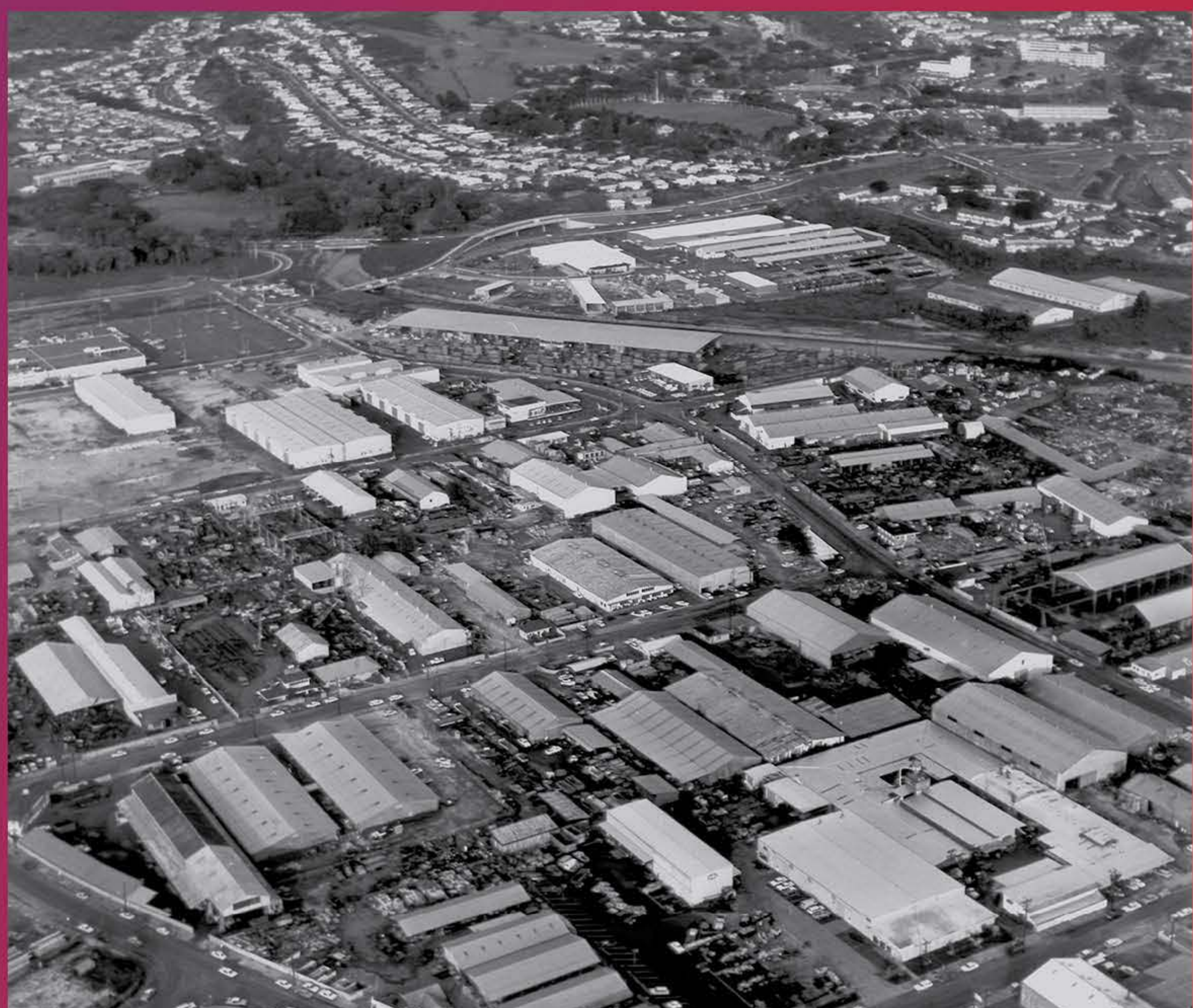
Clarence helped lay the foundation for modern Honolulu. With his Saint Louis classmate, he developed neighborhoods like Moanalua, Salt Lake, and the Airport Industrial Park. He co-founded Hawaii National Bank and transformed open land into the Honolulu Country Club. But with every project, he felt a deep kuleana to give back.



Salt Lake neighborhood



HCC Grand Opening Ad



Airport Industrial Park

HOUSING WITH HEART

In 1967, Clarence built Kukui Gardens—one of the largest affordable housing communities ever undertaken by private individuals in Hawai'i. More than 800 families found not just a roof, but dignity, stability, and a place to call home—right in the heart of Honolulu.



Kukui Gardens aerial view



Grand opening ceremony



Homes for island families

HE GAVE COMPLETELY

Clarence never sought the spotlight. But he gave back—quietly, humbly, and without hesitation. He established The Clarence T.C. Ching Foundation. And when Kukui Gardens was later sold, he poured all of the gross proceeds—\$132 million—into the foundation, ensuring his life's work would continue for generations to come. Today, through scholarships, schools, health centers, and places of hope, The Clarence T.C. Ching Foundation continues to open doors.



Funding his Foundation



The Ching family



Visionary developer, quiet philanthropist

HOPE, CARRIED FORWARD

The Clarence T.C. Ching Foundation has pledged \$5 million to help reimagine the Nuʻuanu YMCA—creating affordable homes and vital community spaces for those who need them most. It's more than a gift. It's a continuation of Clarence's enduring belief: that everyone deserves a chance, a home, a place to belong where you can reach your potential and thrive.

Clarence didn't just build neighborhoods—he built hope. And his legacy continues in the lives he's forever changed.





**MAHALO NUI LOA
TO CLARENCE,
THE CHING FAMILY,
AND THE TRUSTEES OF
THE CLARENCE T.C. CHING
FOUNDATION.**

